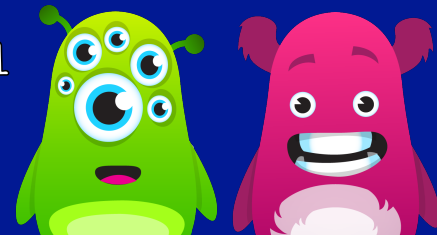


FLORENCE MELLY COMMUNITY PRIMARY SCHOOL

DETERMINATION. RESILIENCE. EMPOWERMENT. APPRECIATION. MOTIVATION & SAFETY

'IF YOU CAN DREAM IT, YOU CAN DO IT!'



Tuesday 3rd December 2019

Dear parents/carers,

SCHOOL CLOSURE - Viral Gastroenteritis/Norovirus

Further to the letter we sent out to parents/carers yesterday, we have experienced more incidents of diarrhoea and vomiting in our school today.

As a result, I am writing to inform you that we have taken the difficult decision to close our school on Wednesday, Thursday and Friday this week (4th - 6th December 2019) in order to try to contain and prevent the spread of the virus. During this time, the school will undergo an industrial deep clean.

This decision has not been made lightly and has been made after discussions with the Community Infection Control Team and Public Health England.

We would like to thank you for your co-operation in this matter and apologise for any inconvenience caused. Information leaflets about viral gastroenteritis are available from the NHS choices website <http://www.nhs.uk> or the school office should parents/carers require any further information.

Our school will re-open as usual on Monday 9th December. Any dinner money or Breakfast Club money already paid for this week will be credited to your account unless you would prefer a refund. In this case, please contact the school office.

The scheduled 'stay and learn' sessions for Year 4 on Friday will not go ahead and will be rescheduled when we return.

My apologies once again for any inconvenience caused and I appreciate that this may cause problems for some families. However, I am sure you will agree that this decision, although a difficult one, has been made with the children's best interests at heart. We take our duty of care towards our children very seriously and firmly believe that closing the school is the best course of action to keep them safe and well.

As always, many thanks for your continued support.

Please note: It is really important that if your child has any of these symptoms, they **should remain off for 48 hours from the last episode of diarrhoea or vomiting**. This is a really important control measure to limit the spread of this infection.

Kindest Regards

Mr Leach and the Senior Leadership Team