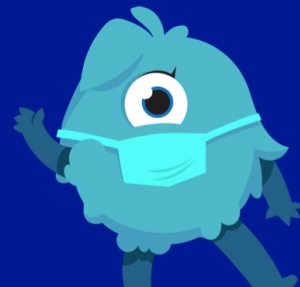
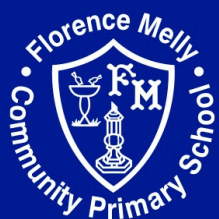


FLORENCE MELLY COMMUNITY PRIMARY SCHOOL NURSERY NEW STARTER PRESENTATION

IF YOU CAN DREAM IT, YOU CAN DO IT!



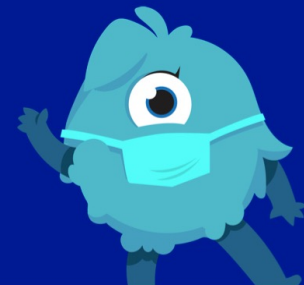
Nursery Parent/Carer Induction 2023/24



FLORENCE MELLY COMMUNITY PRIMARY SCHOOL

NURSERY NEW STARTER PRESENTATION

IF YOU CAN DREAM IT, YOU CAN DO IT!



A Welcome from our Headteacher

I would like to take this opportunity welcome you to our outstanding school. I am honoured to lead this school and being a Headteacher has been a lifelong dream of mine. I am delighted that my first taste of headship is at Florence Melly– a place extremely close to my heart. A place that feels like home.

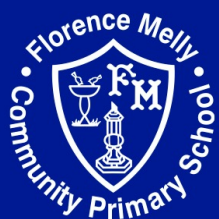
At Florence Melly, we are passionate about providing our pupils with a world class education – all of them – regardless of any barriers they face! We will never settle for anything less – your children deserve the absolute best and we will do everything in our power to deliver that! We want to help create school, working closely with our amazing staff team, that your children are desperate to attend – a place they feel safe and happy – excited and enthralled! A school they can proudly call their own! We believe strongly in our school's DREAMS philosophy and our motto: 'If you can dream it, you can do it' sits firmly at the heart of everything we do.

With the help and support of our pupils, parents, staff and governors, we can make Florence Melly Community Primary School the best school in the country. I hope that I can count on your support as we move forward.

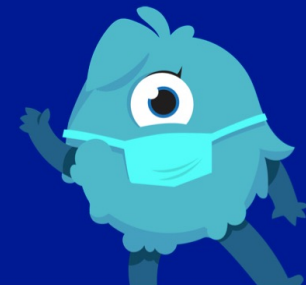
Mr Leach - Headteacher



IF YOU CAN DREAM IT, YOU CAN DO IT!



FLORENCE MELLY COMMUNITY PRIMARY SCHOOL NURSERY NEW STARTER PRESENTATION IF YOU CAN DREAM IT, YOU CAN DO IT!



Our outstanding school – A place we are proud of!

Florence Melly Community Primary School is a larger than average primary, two-form entry school. Our nursery setting is made up of both full-time and part-time places. This year, for the first time ever, we have been able to offer 30-hour free funded places. This is something we are very excited about!

We have a vibrant school website: www.florencemelly.org and an exciting Twitter feed: [@flomellynews](https://twitter.com/flomellynews) which provide a wealth of information, guidance and resource.

In 2019, our school celebrated an outstanding Ofsted inspection. Florence Melly Community Primary School has witnessed significant improvements in recent years and school leaders are committed to making the school the best school it can possibly be. Relationships between staff and pupils are exemplary and a culture of high expectations has led to significant improvements. The biggest challenge the school faces is maintaining this standard but our leaders are committed to being progressive, forward thinking trailblazers - living up to the outstanding status.

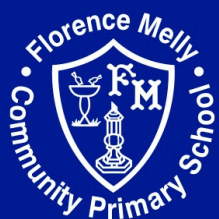
This all starts in our nursery – from the second our pupils/your children walk through the door! Our nursery pupils are the foundation from which we build.

Our DREAMS core values sit at the heart of everything we do.

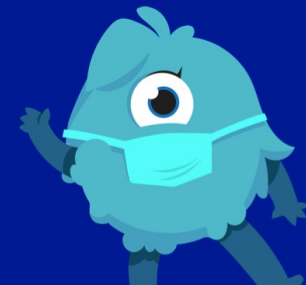
At Florence Melly, we firmly believe that: 'If you can DREAM it, you can do it'!



IF YOU CAN DREAM IT, YOU CAN DO IT!



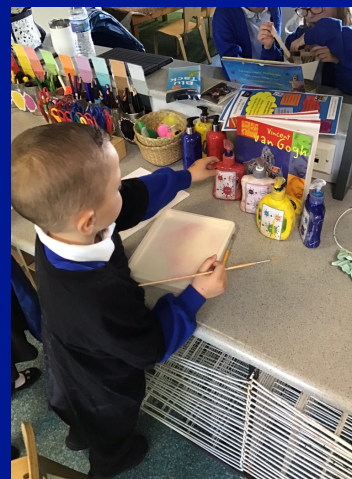
FLORENCE MELLY COMMUNITY PRIMARY SCHOOL NURSERY NEW STARTER PRESENTATION IF YOU CAN DREAM IT, YOU CAN DO IT!



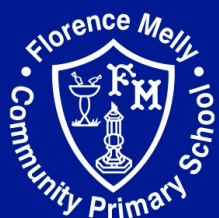
Slow and steady – Shorter sessions to get started!

To further improve and support the transition into school, the children will attend shorter sessions to begin with. In our experience, these short sessions help the children become familiar with staff and their new environment without overwhelming them. That is important to us. The settling in session will last for the first couple of days. The times and dates of these sessions will be confirmed during the up-and-coming 'Meet and Greet' sessions.

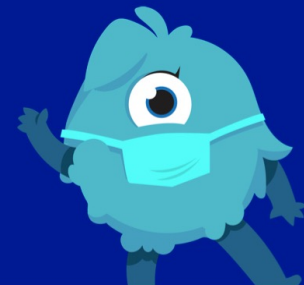
Starting school is scary...we want to make it as smooth and stress-free as possible (for the children and parents/carers).



IF YOU CAN DREAM IT, YOU CAN DO IT!



FLORENCE MELLY COMMUNITY PRIMARY SCHOOL NURSERY NEW STARTER PRESENTATION IF YOU CAN DREAM IT, YOU CAN DO IT!



Our session times and term dates

Our Nursery provision runs between Monday and Friday, during term time only.

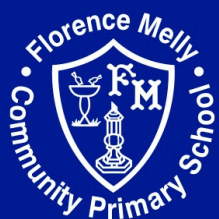
We offer 15-hour funded, part time sessions which can either be:
Daily morning sessions - 8:45am to 11:45am or afternoon sessions - 12:15pm to 3:15pm

We now also offer 30-hour funded sessions, for those who are entitled, through Government's scheme.
Our 30-hour places are from Monday to Friday - 8:45am to 3:15pm

Please visit our website for our term dates: <https://florencemelly.org/parents/term-dates/>. Here you will find downloadable and printable versions, ready for your fridge. We hope that they help!



IF YOU CAN DREAM IT, YOU CAN DO IT!



FLORENCE MELLY COMMUNITY PRIMARY SCHOOL NURSERY NEW STARTER PRESENTATION IF YOU CAN DREAM IT, YOU CAN DO IT!



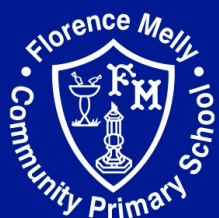
Hungry? It's time for a snack!

At Florence Melly Community Primary School we are committed to ensuring that no child should ever go hungry! When the children arrive at Nursery, they have access to toast and a healthy fruit or vegetable snack. These are available throughout the sessions regardless of whether your child attends in the morning or afternoon.

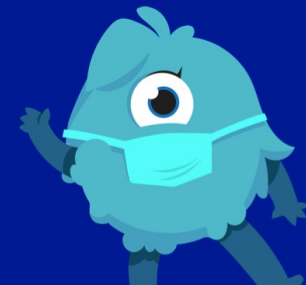
The children will also be offered a drink of milk or water or they can bring in their own bottles from home (containing water). We do not allow the children to bring in cordial, fizzy drinks or fruit juices.



IF YOU CAN DREAM IT, YOU CAN DO IT!



FLORENCE MELLY COMMUNITY PRIMARY SCHOOL NURSERY NEW STARTER PRESENTATION IF YOU CAN DREAM IT, YOU CAN DO IT!



What's for lunch?

We ask that our full-time children bring a healthy packed lunch every day. Please make sure that the lunch is kept in a lunch box that is clearly labelled with your child's name. We ask that packed lunches do not include any fizzy drinks, chocolate or sweets. We also ask that foods that pose a serious risk of choking (for example: grapes, whole tomatoes or small fruits) are cut into smaller, more manageable pieces.

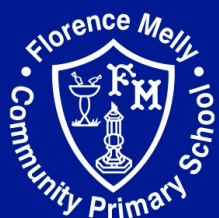
The children Lunch will have their lunch between 11:45am and 12:15pm. They will eat their lunch in the nursery classroom and will be supervised by a member of the nursery team and a lunchtime supervisor/assistant.

If you would like any further guidance regarding what to include in your child's packed lunch, please do not hesitate to contact us.

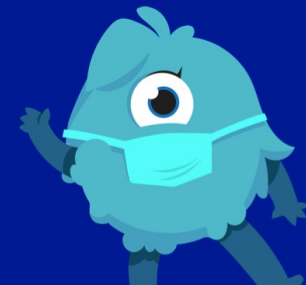
It is vital that you let us know if your child has any allergies.



IF YOU CAN DREAM IT, YOU CAN DO IT!



FLORENCE MELLY COMMUNITY PRIMARY SCHOOL NURSERY NEW STARTER PRESENTATION IF YOU CAN DREAM IT, YOU CAN DO IT!



Dress to impress – Our school uniform!

We believe that school uniform helps the children to foster a sense of belonging. It promotes equality and enhances the tone and atmosphere of our school. Our school uniform can be purchased from our school office – this is a new initiative we are running and that we are excited about. Please contact the office for further details! Uniform can also be bought from 'Lisa's School Wear' on Priory Road.

Nursery Uniform consists of...

A Florence Melly branded blue jogging suit or a school jumper/cardigan/grey trousers/grey skirt/pinafore/white polo shirt/shirt and tie and black shoes. Trainers are not allowed.

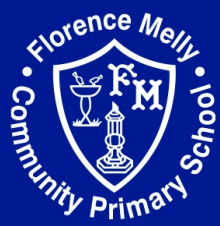
A blue gingham dress/shorts and white, blue or clear jelly shoes can be worn after the Easter holiday.

A PE kits: consists of...

A white polo/round neck t-shirt/ blue shorts and black plimsoles. (Trainers or football kits are not allowed). We encourage the children to come to school wearing their PE kits on their designated PE day. They should wear a jogging suit over their PE kit.

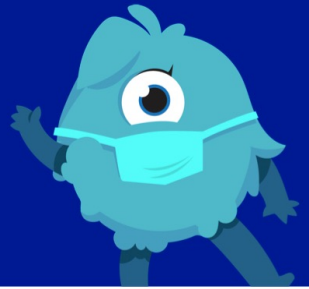
Please see the photographs on the next slide, showing parents/carers how we expect the children to dress for school. It is important to note that there are lots of variations of acceptable uniform - if you have any questions, just ask!

IF YOU CAN DREAM IT, YOU CAN DO IT!

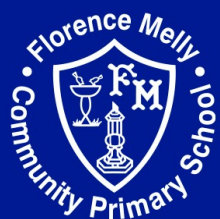


FLORENCE MELLY COMMUNITY PRIMARY SCHOOL NURSERY NEW STARTER PRESENTATION

IF YOU CAN DREAM IT, YOU CAN DO IT!

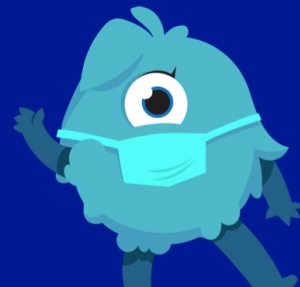


IF YOU CAN DREAM IT, YOU CAN DO IT!

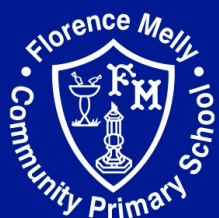


FLORENCE MELLY COMMUNITY PRIMARY SCHOOL NURSERY NEW STARTER PRESENTATION

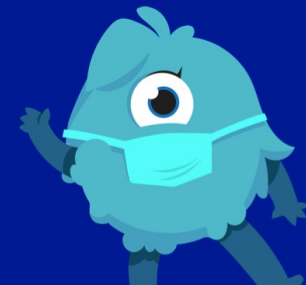
IF YOU CAN DREAM IT, YOU CAN DO IT!



IF YOU CAN DREAM IT, YOU CAN DO IT!



FLORENCE MELLY COMMUNITY PRIMARY SCHOOL NURSERY NEW STARTER PRESENTATION IF YOU CAN DREAM IT, YOU CAN DO IT!



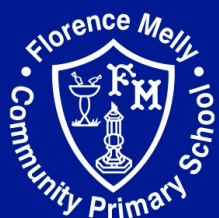
Our exciting EYFS curriculum

We firmly believe that every child deserves the best possible start in life. We aim to provide a curriculum offer that enables each child to fulfill their potential. The EYFS is a very important stage in a child's development – it is the foundation from which further learning can take place. It is quite simply a vital stage in a child's life! A child's early years experience should be happy, active, exciting, fun and secure! At Florence Melly, we adopt a play-based, child-centered approach to our practice. Our children learn by playing and exploring, being active, and through creative and critical thinking. We are keen for this to take place both in the classroom and outdoors.

We want our children to develop a genuine love and passion for reading. We aim to create an environment steeped in high-quality texts and endless opportunities to read for pleasure. We are committed to ensuring that every child leaves Key Stage 1 with the ability to read fluently, confidently and with deep understanding!



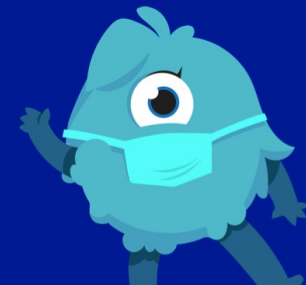
IF YOU CAN DREAM IT, YOU CAN DO IT!



FLORENCE MELLY COMMUNITY PRIMARY SCHOOL

NURSERY NEW STARTER PRESENTATION

IF YOU CAN DREAM IT, YOU CAN DO IT!



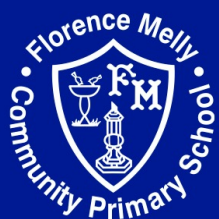
Over the last couple of years we have made significant changes to the curriculum inline with the new EYFS framework. These changes have helped improve outcomes for pupils. There is now a very particular emphasis on early language and literacy. This focus on early language and extending vocabulary has been embedded across the 7 areas of learning. We recognise that promoting early language skills will have a positive effect on a child's overall learning and development.

For more information about the curriculum framework we follow, please visit our school website. Additionally, a copy of the Department for Education's Statutory framework for the early years foundation stage can be accessed by clicking the link below:

[Statutory framework for the early years foundation stage - Setting the standards for learning, development and care for children from birth to five.](#)



IF YOU CAN DREAM IT, YOU CAN DO IT!



FLORENCE MELLY COMMUNITY PRIMARY SCHOOL NURSERY NEW STARTER PRESENTATION IF YOU CAN DREAM IT, YOU CAN DO IT!



Parental engagement and our online platforms!

At Florence Melly, we recognise that parents and carers are the first educators in a child's life and we value your contributions. We want to work in partnership with you and we do this in lots of different and innovative ways. When you visit, you will be introduced to two online communication platforms, which are vital to ensuring that our partnership work is effective. These platforms are Tapestry and Class Dojo. We will talk you through these systems and help get you registered (if you need help) so you are all ready to go! We also have some information guides to help make this easier.

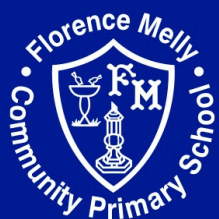
[Tapestry Online Journal](#)

[Class Dojo](#)

Your child will also be allocated a key worker. This is someone who will form a closer bond with your child and will be a great point of contact for you, should you need to speak to anyone in school. That personal touch is important to us!



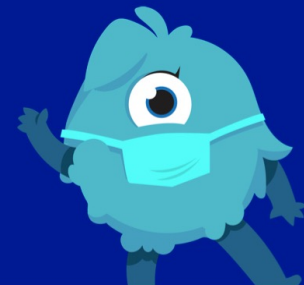
IF YOU CAN DREAM IT, YOU CAN DO IT!



FLORENCE MELLY COMMUNITY PRIMARY SCHOOL

NURSERY NEW STARTER PRESENTATION

IF YOU CAN DREAM IT, YOU CAN DO IT!



Invest in your child's education - How you can help!

We cannot stress this strongly enough, but learning does not just take place at school. We actively encourage you to invest in your child's education and do as much as you possibly can at home. We understand that parents/carers have busy lives but there is always 10 minutes for a bedtime story or a phonics or counting game!

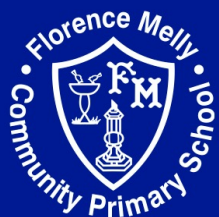
Check out these resources to see how you can help prepare your child for school. We will have a multitude of resources ready for you to access when you come to school for your VIP visit!

[Am I ready for school? Tips for Parents Resource](#)

[School Readiness Poster – The Road to School](#)



IF YOU CAN DREAM IT, YOU CAN DO IT!



FLORENCE MELLY COMMUNITY PRIMARY SCHOOL

NURSERY NEW STARTER PRESENTATION

IF YOU CAN DREAM IT, YOU CAN DO IT!



A few other bits and bobs...

- Nursery children use the EYFS gate at drop off and pick up. This is located on Bushey Road and is not the main entrance on Grandison Road.
- Nursery children are asked to wear a school uniform.
- Like every other year group in the school, our Nursery children have a PE lesson once a week (you will be informed which day this is in due course).
- It is vital that you to label all of your child's clothes! Put their name on absolutely everything!
- The children may bring their own water bottles into school. These must only contain water. We do not allow fizzy drinks, milk, cordial or fruit juices.
- We encourage good attendance – even in Nursery. This helps to form really good habits and provides more opportunities for us to do what we do best – teach! We cannot teach the children when they are at home.
- Please inform school office of any absences.
- We encourage you to provide a bag of spare clothes for you child – in case of an emergency!
- A wealth of information can be found on our school website: www.florencemelly.org.
- Follow us on Twitter: [@flomellynews](https://twitter.com/flomellynews).
- If you have any questions or concerns, please contact the school office on 0151 226 1929 or via email schooladmin@fmp.liverpool.sch.uk.
- We are always here to help!

Welcome to the Flo Melly Family!

IF YOU CAN DREAM IT, YOU CAN DO IT!