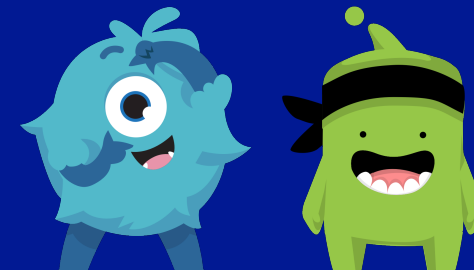


FLORENCE MELLY COMMUNITY PRIMARY SCHOOL

GOVERNORS' INFORMATION AND DUTIES

IF YOU CAN DREAM IT, YOU CAN DO IT!



Name	Date of Appointment	Term of Office		Date they Stepped Down (if applicable)	Who Appointed them	Category of Governor	Voting Rights	Role	Areas of Responsibility	Business and Financial Interests	Governance Roles in other Educational Institutions	Material interests
		From	To									
Aaron Leach	01/04/20	26/11/18	Ongoing	N/A	Governing Body	Headteacher	Yes	N/A	N/A	N/A	Co-opted Governor at West Kirby Primary School and Barlows Primary School.	N/A
Janet Matthews	04/11/14	26/09/22	25/09/26	N/A	Parents	Co-opted Governor	Yes	Chair of Governors	Link SEND Governor	N/A	N/A	N/A
Carl Gilbertson	28/04/17	27/04/21	27/04/25	N/A	Governing Body	Co-opted Governor	Yes	N/A	Link Pupil Premium Governor Link Inclusion Governor Link GDPR Governor	Owner of MGL (School IT Provider)/SLA.	Chair of Governors at Wellesbourne. Governor at St Vincent de Paul. Governor at Archbishop Beck.	Sister in law employed at the school.
Roxanne Brookes	01/02/19	01/02/23	31/01/27	N/A	Parents	Parent Governor	Yes	N/A	N/A	N/A	N/A	One child attends the school.
Stuart Davies	15/02/22	15/02/22	14/02/26	N/A	Governing Body	Co-opted Governor	Yes	N/A	N/A	N/A	Governor at West Derby High School.	Two children attend the school.
Angela Wilson-Gotham	15/02/22	15/02/22	14/02/26	N/A	Parents	Parent Governor	Yes	Vice Chair of Governors	N/A	N/A	N/A	Two children attend the school.
James Kilburn	06/10/21	06/10/21	05/10/25	N/A	Governing Body	Co-opted Governor	Yes	N/A	Link Safeguarding Governor	N/A	Co-chair at the federation of St Cecilia's Infant and Junior school. Chair of Governors at the academy of St Francis of Assisi.	N/A
Michaela Wright	14/07/21	14/07/21	13/07/25	N/A	Governing Body	Co-opted Governor	Yes	N/A	N/A	Owner of Apple of my Eye (School Cookery Provider)/SLA.	N/A	N/A
Rose Findell	01/01/21	01/01/21	31/12/24	N/A	Staff	Staff Governor	Yes	N/A	N/A	N/A	N/A	Employed as a SENDCO at the school.
Kieran Baillie	01/05/20	01/05/20	Ongoing	31/12/23	Governing Body	Associate Member	No	N/A	N/A	N/A	LA Governor at Fazakerley Primary School.	Employed as an AHT at the school.
Nikki Bear	17/03/21	17/03/21	Ongoing	N/A	Governing Body	Associate Member	No	N/A	N/A	N/A	N/A	Employed as an AHT at the school.
Christina O'Keefe	11/05/22	14/07/21	Ongoing	N/A	Governing Body	Associate Member	No	N/A	N/A	N/A	Parent Governor at St. Michael In The Hamlet Community Primary School.	Employed as an AHT at the school.
Peter Evans	05/12/24	05/12/24	04/12/28	N/A	LA/Governing Body	LA Governor	Yes	N/A	N/A	N/A	Deputy Headteacher St Francis Xavier's College.	One child attends the school.
Hannah Earle	08/07/24	08/07/24	07/07/28	N/A	Governing Body	Co-opted Governor	Yes	N/A	N/A	N/A	N/A	N/A

IF YOU CAN DREAM IT, YOU CAN DO IT!