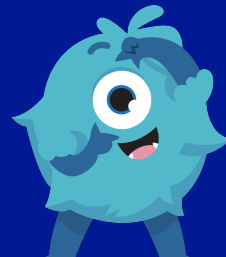


# FLORENCE MELLY COMMUNITY PRIMARY SCHOOL

## WEEKLY ATTENDANCE NEWSLETTER

IF YOU CAN DREAM IT, YOU CAN DO IT!



## IN SCHOOL, ON TIME, EVERY DAY!

"Absences add up! Did you know that missing just 2 days of school a month means that a child misses 10% of their education in an academic year. Those lost learning opportunities can impact our pupils throughout their school careers and really do mount up. Getting into the habit of daily attendance is more important than ever. It helps to: reduce stress, build routines, make it easier to connect with friends and teachers and scaffold learning, helping us to identify when pupils might need additional support. At Florence Melly, we really do believe that if you can dream it, you can do it! But it's so much harder to achieve your dreams if you don't show up to chase them. Every day we will offer a warm welcome, something to eat, and a fresh opportunity to build upon learning; helping every child to succeed!"



### WEEKLY PRIZE WINNERS!



Each week we announce five attendance prize winners in our celebration assembly.

### CLASS ATTENDANCE TROPHY WINNERS!

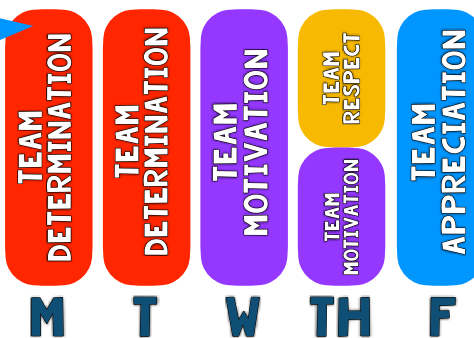


98.7%

Every week, the class with the best weekly attendance wins the famous 'Flo Melly Attendance Trophy'.

5M

### DREAM TEAM DAILY WINNERS!



Every day, we see which DREAM team had the best attendance. The winning team receives 10 tokens!

WHOLE-SCHOOL ATTENDANCE SO FAR THIS YEAR!

93.9%

WHOLE-SCHOOL PERSISTENT ABSENTEEISM

19.2%

NUMBER OF 100% ATTENDEES THIS WEEK

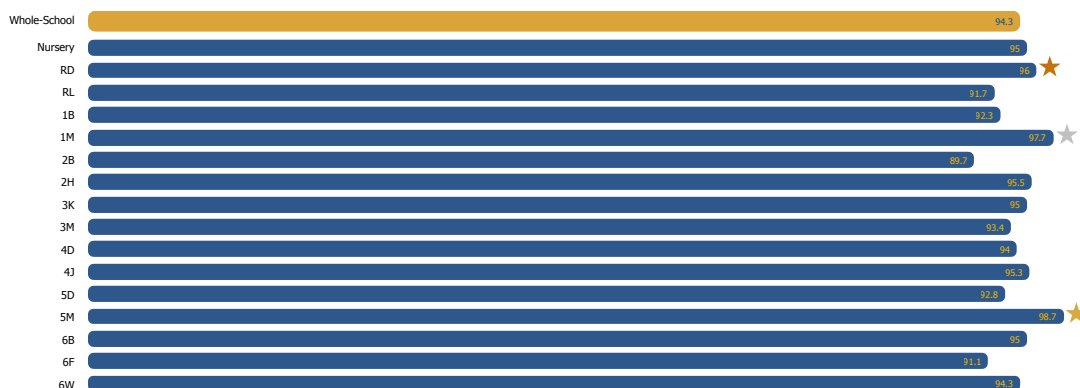
362

NUMBER OF 100% ATTENDEES THIS YEAR

45

### GOLD, SILVER AND BRONZE!

At the end of every week we celebrate those classes who finish in gold, silver and bronze place. These classes receive a certificate to hang proudly in their classrooms! The winning class also get to keep the famous Flo Melly trophy in their classroom for the week!



Well done to 1M and 5M for beating our 97% target! You have won an extra playtime next week!

### ATTENDANCE MATTERS LOST DAYS = LOST LEARNING!

Think 90% attendance is good? Think again! This is what lost days really looks like! Now do you think 90% attendance is good?

### IN SCHOOL, ON TIME, EVERY DAY!

	Days missed	Lessons missed	School weeks missed
95%	10 days missed	40 lessons missed	2 weeks missed
90%	19 days missed	76 lessons missed	3 weeks and 4 days missed
85%	28 days missed	112 lessons missed	5 weeks and 3 days missed
80%	37 days missed	148 lessons missed	7 weeks and 2 days missed