



WE WILL, WE WILL...ROCK YOU!

Earlier today, in memory of our Charlie Lowe, we once again welcomed back the amazing Rock Kidz team, who hosted an amazing celebration day for the children to enjoy. A fitting way to mark such an incredible boy, who we tragically lost two years ago. Through the power of music they delivered messages about perseverance, self-esteem, anti-bullying, inclusion and aspirations. The team at Rock Kidz visited us shortly after Charlie's death and they helped to pick up our school community when we were at our lowest. This week, the whole Flo Melly family came back together and embraced the day; we dressed as Rock Stars and rocked out! The perfect way to remember such a wonderful boy.

Chester Zoo Workshops at Flo Melly!

A big shout out to Jenny from the Conservation Team at Chester Zoo, who visited our school earlier this week to work with Year 2 and Year 3. The Chester Zoo team are working with our children around the important issue of conservation as they aim to get as many people as possible learning about the natural world and taking action for wildlife. The sessions were designed to ignite curiosity and develop the children's understanding of living things and their habitats. Interactive activities included captivating presentations featuring stunning visuals of various animal species, along with hands-on demonstrations that allowed the children to explore animal habitats and behaviours. Exciting stories were shared about the unique characteristics of a variety of species, highlighting the importance of biodiversity and the vital role each creature plays in its ecosystem.

Extra-Curricular Clubs for this Half-Term

We are delighted to inform parents/carers about the new extra-curricular clubs available to the children until the May half-term break. To see what clubs are on offer this half-term, please click the following link: <https://florencemelly.org/wp-content/uploads/2025/04/Extra-Curricular-Clubs-Summer-Term-1-2025.pdf>. To book your child a place, please visit our Class Dojo platform to access the online booking form.

This Week's Book Recommendation...

This week's book recommendation is [The Boy with Big Decisions](#) by Helen Rutter. Fred Timple's parents control every aspect of his life. They tell him what to wear, eat, think, and feel so that now he doesn't know how to make a decision of his own. Having just moved house, Fred must go to a new school and his parents have chosen the Gains: a pressurised, academic school he hates the thought of. Fred would really like to go to Browtree, which has an amazing art department and where he thinks he could flourish. But no one cares what he wants. Then, waiting at the bus stop on his first day, Fred is suddenly faced with a choice. Two buses arrive at once: one is going to the Gains, the other to Browtree. Dare he take his destiny into his own hands and go to the school he wants, or does he follow his parents' wishes yet again? With multiple permutations and eight possible endings, readers are invited to select Fred's path as he is faced with choices that often terrify him. Touching on bullying and honesty, Fred's ultimate life lesson is that getting things wrong is OK - it's how we learn to make better decisions next time round.



IMPORTANT DATES FOR YOUR DIARY!

28/04/25

Chick Hatching Kits Arrive in School

28/05/25

Our New Extra-Curricular Clubs Start

05/05/25

Bank Holiday - School is Closed!

06/05/25

Reception - School Health Screening

09/05/25

Years 2 and 3 Trip to Chester Zoo

12/05/25

Year 6 SATs Week

23/05/25

Year 6 Robinwood Residential

23/05/25

School Closes for Half-Term

NEXT WEEK'S SCHOOL MENU



Next week, our brilliant dinner staff team will be serving the 'Week 2' menu!

End of the Week Update for Parents/Carers - Friday 25th April 2025

I'd like to take this opportunity to welcome you all back to school following the Easter break. I hope that you all managed to enjoy some well deserved family time and the sunshine...unbelievable, I know! It was wonderful welcoming the children back into school on Tuesday, we have missed them so much. They were all eager to tell us about their holidays, adventures and the amount of chocolate they consumed! I really do love the Summer term - it's packed full of outdoor learning, sunshine, trips and treats! We have lots of brilliant activities and events planned and we are all raring to go! As always, if you have any questions or concerns, please do not hesitate to get in touch - we are always here to help! Thank you for your continued support - we really appreciate it!

After the Easter break, as part of our Cultural Capital curriculum, the children will be exploring...

- Motivation, as this is our Core Value theme for this half-term.
- Coping with Change, as our Relationships and Health Education theme. This topic explores how people grow and change from babies, through puberty to adulthood. At Key Stage 1, it examines ways in which children have grown and how they will continue to change, and how to develop resilience. At Key Stage 2, it identifies changes that will take place in children's bodies during puberty, and explores ways to manage the emotional effects of life changes, including the transition to secondary school.
- Our Dreams Core Values during their weekly 'Cultural Capital' assembly and using the picture book '[It's Your World Now! by Barry Falls](#)' in order to immerse them in the theme. You can buy the book by clicking on the link above or alternatively, you can watch/listen to it using YouTube here: https://www.youtube.com/watch?v=M_1PUY8rtdM.

Wake Up Wednesday - What Parents Need to Know about Making Friends Online

This guide looks at the challenges of children forming friendships online, highlighting key risks such as grooming, privacy concerns and inappropriate content - and offers tips for staying safe: <https://florencemelly.org/wp-content/uploads/2025/04/making-friends-online.pdf>.

Clubmoor & Ellergreen Children's Centre Timetable

Please find attached the new Clubmoor & Ellergreen Children's Centre timetable for Spring 2025 (mid-April to July): <https://florencemelly.org/wp-content/uploads/2025/04/UTF-8CC-Programme-Spring-2025-Apr-July.pdf>. This term's programme includes a wide range of universal and targeted support, such as: Stay and Play sessions; SEND-specific groups like SWAN and Little Communicators; Parenting programmes including Nurture and You & Me, Mum and Health visitor clinics, feeding support, and antenatal services. If you want more information about the groups or how to access support, feel free to get in touch with the team on 0151 233 8500.

Wraparound Care Update

Staff are working really hard to finalise our plans for our new wraparound care. It is getting closer and closer to being launched and we are confident that this will be up and running this half-term. We will provide a further update shortly.

Welcome to Flo Melly - Mrs Scott, our New School Business Manager!

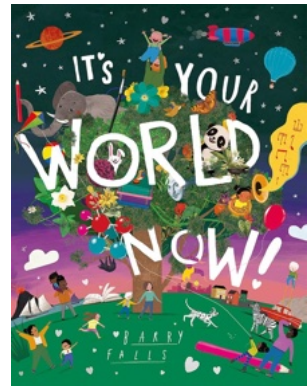
I would like to take this opportunity to welcome Mrs Scott, our new School Business Manager, to our Flo Melly family. Mrs Scott joins us from another local primary school and I am sure that she will prove to be a brilliant addition to our amazing team. Already, she is working hard to find ways to stretch our budget further so that we can spend our money on things that are going to enhance the school and the experience for our wonderful children. If you get the chance, pop your head into the office and say hi (which many of you have already).

Easter Voucher Update

Just a little update about the Easter FSM vouchers. We are still waiting for the vouchers to arrive from Liverpool City Council. We have been informed by the Free School Meals team that, as in previous times, these are not holiday vouchers but wherever possible they will issue them to coincide with school holidays. As soon as they land, we will process them and issue them to those eligible.

The New Spring/Summer Lunch Menus

If you missed it before the Easter break, we have now started our new Spring and Summer lunch menus. For more information, please click on the following link: <https://florencemelly.org/parents/school-menu/>.



Monday	Tuesday	Wednesday	Thursday	Friday
10:00-11:00 Nurture Programme 11:00-12:00 You & Me 12:00-13:00 Mum and Health 13:00-14:00 Feeding Support 14:00-15:00 Antenatal Services 15:00-16:00 Stay and Play 16:00-17:00 SEND-specific groups 17:00-18:00 Little Communicators 18:00-19:00 SWAN	10:00-11:00 Nurture Programme 11:00-12:00 You & Me 12:00-13:00 Mum and Health 13:00-14:00 Feeding Support 14:00-15:00 Antenatal Services 15:00-16:00 Stay and Play 16:00-17:00 SEND-specific groups 17:00-18:00 Little Communicators 18:00-19:00 SWAN	10:00-11:00 Nurture Programme 11:00-12:00 You & Me 12:00-13:00 Mum and Health 13:00-14:00 Feeding Support 14:00-15:00 Antenatal Services 15:00-16:00 Stay and Play 16:00-17:00 SEND-specific groups 17:00-18:00 Little Communicators 18:00-19:00 SWAN	10:00-11:00 Nurture Programme 11:00-12:00 You & Me 12:00-13:00 Mum and Health 13:00-14:00 Feeding Support 14:00-15:00 Antenatal Services 15:00-16:00 Stay and Play 16:00-17:00 SEND-specific groups 17:00-18:00 Little Communicators 18:00-19:00 SWAN	10:00-11:00 Nurture Programme 11:00-12:00 You & Me 12:00-13:00 Mum and Health 13:00-14:00 Feeding Support 14:00-15:00 Antenatal Services 15:00-16:00 Stay and Play 16:00-17:00 SEND-specific groups 17:00-18:00 Little Communicators 18:00-19:00 SWAN



FLORENCE MELLY COMMUNITY PRIMARY SCHOOL

WEEKLY ATTENDANCE NEWSLETTER

IF YOU CAN DREAM IT, YOU CAN DO IT!



IN SCHOOL, ON TIME, EVERY DAY!

This week's key attendance message...

A HUGE well done to everyone who managed to attend school every day this week. Attending school, on time, every day is vital to your child's future success. We will be having a big push on reducing the number of children who are considered to be 'Persistently Absent' this half term. This is an area that we have made big improvements with this year and want to continue to improve before the year is out. We have so many children so close to moving beyond the 90% threshold and we will continue to support these children and families to improve further. Often in school we celebrate those who attend 97% or more of the time but our next initiative will be focussing on the most improved attenders too! More details will follow shortly. Taking the odd day off here and there is really impactful and often pushes children into the PA zone! Let's work together to do our best to be in school, on time, every day this half-term!

WEEKLY PRIZE WINNERS!



Each week we announce five attendance prize winners in our celebration assembly.

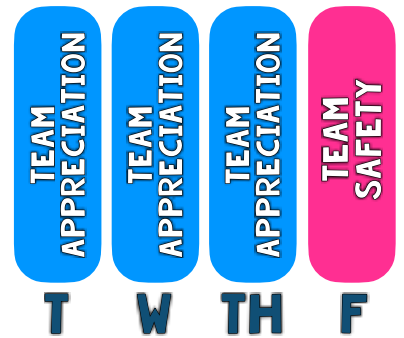
CLASS ATTENDANCE TROPHY WINNERS!



99.6%

Every week, the class with the best weekly attendance wins the famous 'Flo Melly Attendance Trophy'.

DREAM TEAM DAILY WINNERS!



Every day, we see which DREAM team had the best attendance. The winning team receives 10 tokens!

WHOLE-SCHOOL ATTENDANCE SO FAR THIS YEAR!

93.9%

WHOLE-SCHOOL PERSISTENT ABSENTEEISM

15.9%

NUMBER OF 100% ATTENDEES THIS WEEK

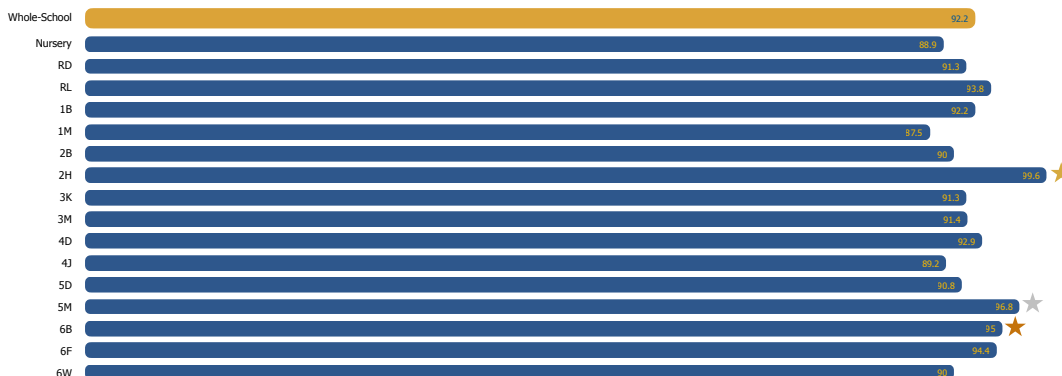
336

NUMBER OF 100% ATTENDEES THIS YEAR

31

GOLD, SILVER AND BRONZE!

At the end of every week we celebrate those classes who finish in gold, silver and bronze place. These classes receive a certificate to hang proudly in their classrooms! The winning class also get to keep the famous Flo Melly trophy in their classroom for the week!



One Class beat our 97% target this week, and earned themselves an extra play. Well done to 2H!

ATTENDANCE MATTERS LOST DAYS = LOST LEARNING!

Think 90% attendance is good? Think again! This is what lost days really looks like! Now do you think 90% attendance is good?

IN SCHOOL, ON TIME, EVERY DAY!

	Days missed	Lessons missed	School weeks missed
95%	10 days missed	40 lessons missed	2 weeks missed
90%	19 days missed	76 lessons missed	3 weeks and 4 days missed
85%	28 days missed	112 lessons missed	5 weeks and 3 days missed
80%	37 days missed	148 lessons missed	7 weeks and 2 days missed