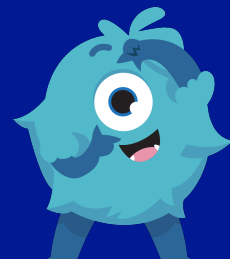


FLORENCE MELLY COMMUNITY PRIMARY SCHOOL

WEEKLY ATTENDANCE NEWSLETTER

IF YOU CAN **DREAM** IT, YOU CAN DO IT!



IN SCHOOL, ON TIME, EVERY DAY!

This week's key attendance message...

We are almost at the end of a very long and busy school year, so we fully appreciate how tired all staff members, families and children are. As a result of this, our whole school attendance has dipped over the past few weeks, so we are reaching out to parents and carers to encourage you to send your children into school every day possible over the final five weeks of term. To support with this, we have arranged lots of enrichment opportunities, sporting events, class trips and drop-down days to ensure that the final half term is an extra special one! Children need to be in school, on time, every day to enjoy each of these. We really appreciate your support!

WEEKLY PRIZE WINNERS!



Each week we announce five attendance prize winners in our celebration assembly.

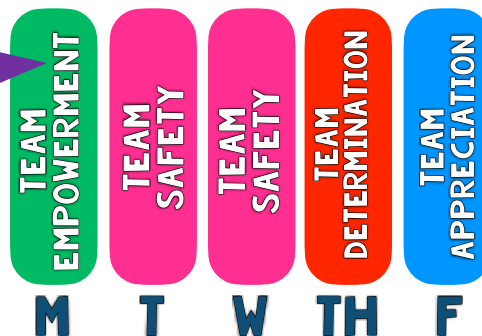
CLASS ATTENDANCE TROPHY WINNERS!



97.3%

Every week, the class with the best weekly attendance wins the famous 'Flo Melly Attendance Trophy'.

DREAM TEAM DAILY WINNERS!



Every day, we see which DREAM team had the best attendance. The winning team receives 10 tokens!

WHOLE-SCHOOL ATTENDANCE SO FAR THIS YEAR!

93.5%

WHOLE-SCHOOL PERSISTENT ABSENTEEISM

18.4%

NUMBER OF 100% ATTENDEES THIS WEEK

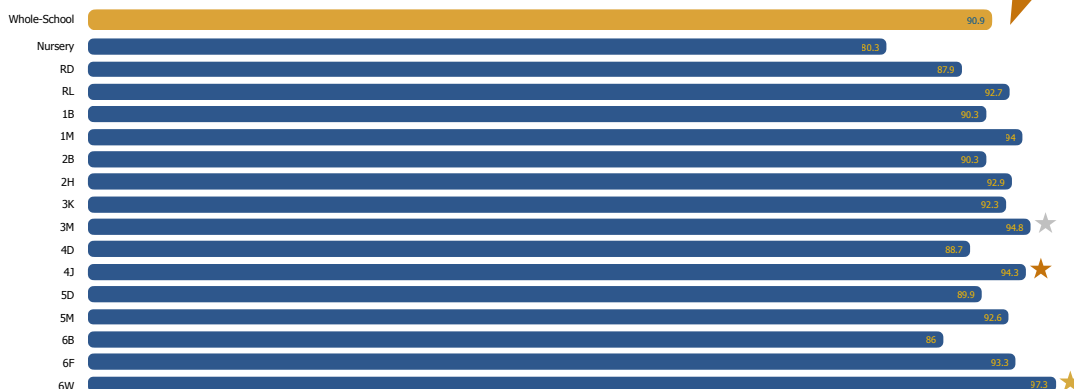
329

NUMBER OF 100% ATTENDEES THIS YEAR

25

GOLD, SILVER AND BRONZE!

At the end of every week we celebrate those classes who finish in gold, silver and bronze place. These classes receive a certificate to hang proudly in their classrooms! The winning class also get to keep the famous Flo Melly trophy in their classroom for the week!



Well done to 6W who beat our 97% target this week and earned themselves an extra play!

ATTENDANCE MATTERS LOST DAYS = LOST LEARNING!

Think 90% attendance is good? Think again! This is what lost days really looks like! Now do you think 90% attendance is good?

IN SCHOOL, ON TIME, EVERY DAY!

	Days missed	Lessons missed	School weeks missed
95%	10 days missed	40 lessons missed	2 weeks missed
90%	19 days missed	76 lessons missed	3 weeks and 4 days missed
85%	28 days missed	112 lessons missed	5 weeks and 3 days missed
80%	37 days missed	148 lessons missed	7 weeks and 2 days missed