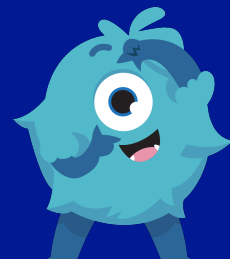


FLORENCE MELLY COMMUNITY PRIMARY SCHOOL

WEEKLY ATTENDANCE NEWSLETTER

IF YOU CAN DREAM IT, YOU CAN DO IT!



IN SCHOOL, ON TIME, EVERY DAY!

This week's key attendance message...

Let's Finish Summer Strong! With just 4 weeks left of the school term, every day counts! Great attendance means more learning, more fun, and more time with friends. Help your child make the most of these last few weeks - let's aim for 100% attendance and finish the summer term on a high note! Every day in school is a step forward. Let's keep showing up, learning, and growing-together! To help encourage great attendance, we are launching this new attendance challenge. For the chance to win a family pass to Otterspool Adventure Park, get involved in this special 4-week attendance challenge! Every child who is in school every day and on time over the next four weeks will be entered into a prize draw to win. A lucky winner will be chosen from each year group - so make sure you're in school, on time, every day!

WEEKLY PRIZE WINNERS!



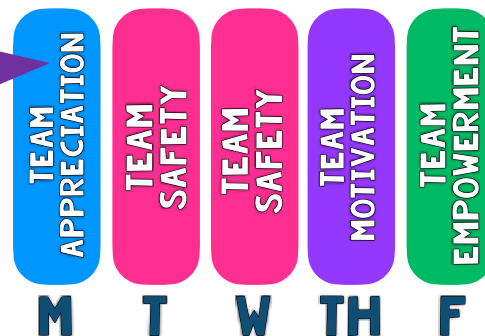
Each week we announce five attendance prize winners in our celebration assembly.

CLASS ATTENDANCE TROPHY WINNERS!



Every week, the class with the best weekly attendance wins the famous 'Flo Melly Attendance Trophy'.

DREAM TEAM DAILY WINNERS!



Every day, we see which DREAM team had the best attendance. The winning team receives 10 tokens!

WHOLE-SCHOOL ATTENDANCE SO FAR THIS YEAR!

93.5%

WHOLE-SCHOOL PERSISTENT ABSENTEEISM

19.1%

NUMBER OF 100% ATTENDEES THIS WEEK

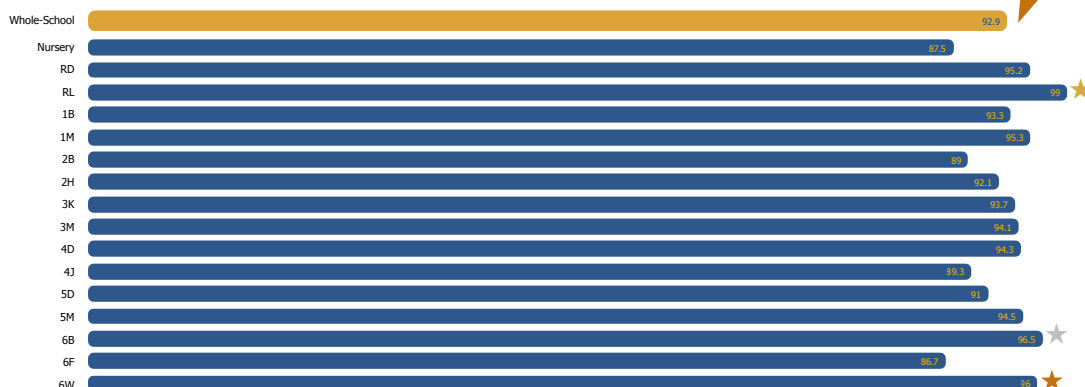
341

NUMBER OF 100% ATTENDEES THIS YEAR

25

GOLD, SILVER AND BRONZE!

At the end of every week we celebrate those classes who finish in gold, silver and bronze place. These classes receive a certificate to hang proudly in their classrooms! The winning class also get to keep the famous Flo Melly trophy in their classroom for the week!



Well done to RL who beat our 97% target this week and earned themselves an extra play!

ATTENDANCE MATTERS LOST DAYS = LOST LEARNING!

Think 90% attendance is good? Think again! This is what lost days really looks like! Now do you think 90% attendance is good?

IN SCHOOL, ON TIME, EVERY DAY!

	Days missed	Lessons missed	School weeks missed
95%	10 days missed	40 lessons missed	2 weeks missed
90%	19 days missed	76 lessons missed	3 weeks and 4 days missed
85%	28 days missed	112 lessons missed	5 weeks and 3 days missed
80%	37 days missed	148 lessons missed	7 weeks and 2 days missed