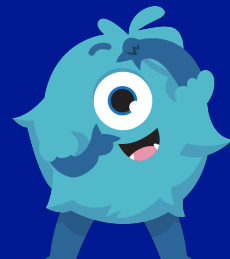


Friday 19th September 2025

FLORENCE MELLY COMMUNITY PRIMARY SCHOOL

WEEKLY ATTENDANCE NEWSLETTER

IF YOU CAN **DREAM** IT, YOU CAN DO IT!



IN SCHOOL, ON TIME, EVERY DAY!

This week's key attendance message...

Thank you to the families who have worked hard to ensure their children have attended school every day so far this term - keep it up! This week we would like to stress the importance of arriving in school on time each and every day. Punctuality in primary school sets the foundation for a child's success both academically and socially. Arriving on time helps children to start the day calmly, engage fully in lessons, and develop a sense of responsibility. It also fosters good habits that carry into later education and life. When children are punctual, they show respect for their teachers and classmates, and they gain a better understanding of the importance of time management – a skill that will benefit them for years to come.

ATTENDANCE MATTERS at FLORENCE MELLY! Make sure that you are...IN SCHOOL, ON TIME, EVERY DAY!

WEEKLY PRIZE WINNERS!



Each week we announce five attendance prize winners in our celebration assembly.

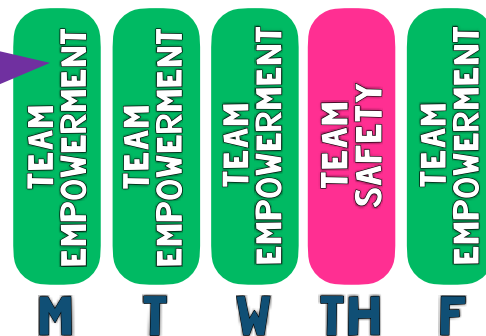
CLASS ATTENDANCE TROPHY WINNERS!



99.4%

Every week, the class with the best weekly attendance wins the famous 'Flo Melly Attendance Trophy'.

DREAM TEAM DAILY WINNERS!



Every day, we see which DREAM team had the best attendance. The winning team receives 10 tokens!

WHOLE-SCHOOL ATTENDANCE SO FAR THIS YEAR!

95.8%

WHOLE-SCHOOL PERSISTENT ABSENTEEISM

14.0%

NUMBER OF 100% ATTENDEES THIS WEEK

371

NUMBER OF 100% ATTENDEES THIS YEAR

330

GOLD, SILVER AND BRONZE!

At the end of every week we celebrate those classes who finish in gold, silver and bronze place. These classes receive a certificate to hang proudly in their classrooms! The winning class also get to keep the famous Flo Melly trophy in their classroom for the week!



Well done to 2RB, RM and 2H who all beat our 97% target this week and earned themselves an extra play!

ATTENDANCE MATTERS LOST DAYS = LOST LEARNING!

Think 90% attendance is good? Think again! This is what lost days really looks like! Now do you think 90% attendance is good?

IN SCHOOL, ON TIME, EVERY DAY!

	Days missed	Lessons missed	School weeks missed
95%	10 days missed	40 lessons missed	2 weeks missed
90%	19 days missed	76 lessons missed	3 weeks and 4 days missed
85%	28 days missed	112 lessons missed	5 weeks and 3 days missed
80%	37 days missed	148 lessons missed	7 weeks and 2 days missed