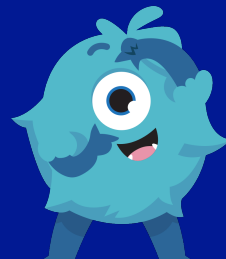


FLORENCE MELLY COMMUNITY PRIMARY SCHOOL

WEEKLY ATTENDANCE NEWSLETTER

IF YOU CAN DREAM IT, YOU CAN DO IT!



IN SCHOOL, ON TIME, EVERY DAY!

This week's key attendance message...

Did you know that attending school on time every day provides strong academic, social, and emotional benefits that build a child's long-term success? Consistent, punctual attendance helps children to keep up with daily lessons, develop essential literacy and numeracy skills, and avoid the learning gaps that can arise from missing even small parts of the school day. Socially, being present from the start of each day allows children to participate fully in group routines, collaborative activities, and peer interactions that strengthen communication, teamwork, and friendships. Emotionally, regular attendance creates a stable routine that fosters confidence, reduces anxiety about falling behind, and helps children feel connected to their classroom community. Together, these benefits support a positive school experience and lay the foundation for continued engagement and achievement.

**MOMENTS
MATTER,
ATTENDANCE
COUNTS.**



WEEKLY PRIZE WINNERS!



Each week we announce five attendance prize winners in our celebration assembly.

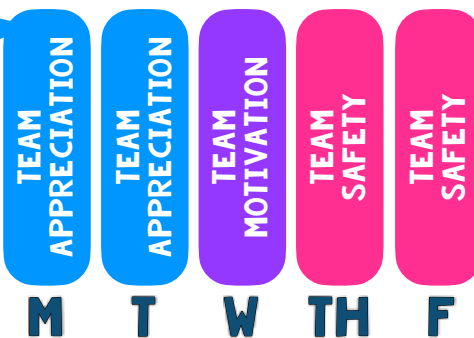
CLASS ATTENDANCE TROPHY WINNERS!



99.3%

Every week, the class with the best weekly attendance wins the famous 'Flo Melly Attendance Trophy'.

DREAM TEAM DAILY WINNERS!



Every day, we see which DREAM team had the best attendance. The winning team receives 10 tokens!

WHOLE-SCHOOL ATTENDANCE
SO FAR THIS YEAR

93.7%

WHOLE-SCHOOL PERSISTENT
ABSENTEEISM

23.2%

NUMBER OF 100% ATTENDEES
THIS WEEK

353

NUMBER OF 100% ATTENDEES
THIS YEAR

135

GOLD, SILVER AND BRONZE!

At the end of every week we celebrate those classes who finish in gold, silver and bronze place. These classes receive a certificate to hang proudly in their classrooms! The winning class also get to keep the famous Flo Melly trophy in their classroom for the week!



2M, 2H and RM all beat our 97% target this week. Well done! Let's see if we can beat that next week!

ATTENDANCE MATTERS LOST DAYS = LOST LEARNING!

Think 90% attendance is good? Think again! This is what lost days really looks like! Now do you think 90% attendance is good?

IN SCHOOL, ON TIME, EVERY DAY!

	Days missed	Lessons missed	School weeks missed
95%	10 days missed	40 lessons missed	2 weeks missed
90%	19 days missed	76 lessons missed	3 weeks and 4 days missed
85%	28 days missed	112 lessons missed	5 weeks and 3 days missed
80%	37 days missed	148 lessons missed	7 weeks and 2 days missed