

# EXPECTATIONS FOR BEHAVIOUR

## The signals for GETTING YOUR ATTENTION!

The staff member will capture the attention of the children.

They will count down and say...

3. STOP!
2. FOCUS.
1. THANK YOU.



## GETTING THE ATTENTION OF STAFF

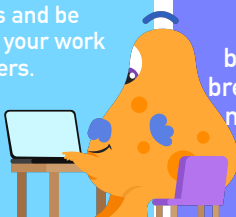
Raise your hand if you need to get the attention of a staff member. Shouting out or out of seat movement is not acceptable as it distracts other learners. Everything we say and do is rooted in mutual respect for each other.



## CLASSROOM LAYOUT

You will sit in groups and be encouraged to discuss your work with your partners.

You should sit with your legs under the table and your chairs firmly on the floor!



## TOILETING!

Where possible, toilet breaks should be kept for break and lunchtimes. If you need the toilet, raise your hand and ask a staff member.

## HOLD THE DOORS OPEN!

Class prefects hold the doors.

Show your classmates that you appreciate them by saying thank you.

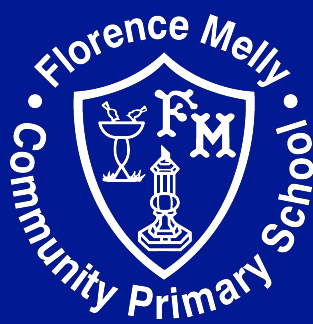


## KINDNESS COUNTS

No act of kindness, no matter how small, is ever wasted!

At school, being kind means helping a friend, smiling at someone new, or using kind words. When you show kindness, you make others feel happy and safe. It doesn't matter if someone looks, talks, or thinks differently - everyone deserves respect and care. A small act of kindness can brighten someone's whole day. So be a helper, a good listener, and a friend to all.

Kindness starts with you!



## TRANSITIONS AND LINING UP!

Staff will always collect you on time - show them that you are ready.

You are expected to walk in single file in your line spaces - respectfully, conscientiously and on the left side of the corridor.



## WATER BOTTLES



Are kept neatly outside of the classroom. You must raise your hand and ask a staff member if you need a drink. You are not to help yourself to a drink when returning from the playground.



## SHOW US YOU CARE! BY STARTING EACH DAY AND LESSON THE RIGHT WAY!

- Calm
- Appreciative and attentive
- Ready and respectful
- Engaged in your learning

## IN THE DINNER HALL

You are to stay in your seats unless you are tidying up.

You are encouraged to chat, quietly, amongst your peers and tidy up after yourself.

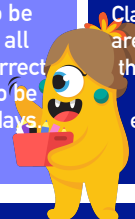


## WELCOMING VISITORS

Always greet and welcome visitors to Florence Melly. Introduce yourself and ask them if they require any help or assistance.

## UNIFORM

We have high expectations for pupils' uniform. Staff will challenge incorrect uniform. Shirts are to be tucked in at all times. The correct PE kits are to be worn on PE days.



## TIDYING UP!

Classrooms and communal spaces are to be left clutter-free and tidy at the end of every lesson. You show us that you appreciate the environment and equipment by looking after them.

## PERSONAL ITEMS AND EQUIPMENT

With the exception of sensory aids provided by a staff member, toys and other personal items are not to be brought into school at any time.

These items distract learning!



# THE FLO MELLY WAY!