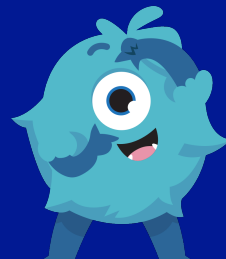


FLORENCE MELLY COMMUNITY PRIMARY SCHOOL

WEEKLY ATTENDANCE NEWSLETTER

IF YOU CAN DREAM IT, YOU CAN DO IT!



IN SCHOOL, ON TIME, EVERY DAY!

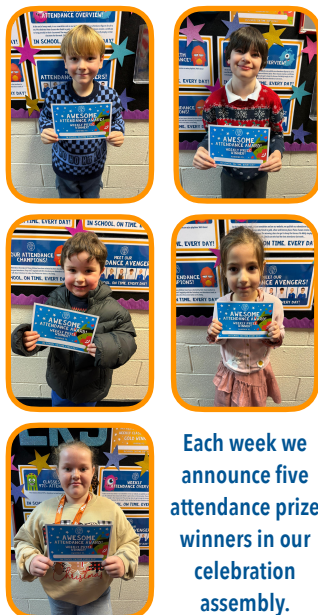
This week's key attendance message...

As the Christmas period approaches, school can feel especially exciting – but it's also a time when consistent routines become even more important for our pupils. Maintaining good attendance and punctuality helps provide the structure children rely on to feel secure, focused and ready to learn, especially during a busy and sometimes overwhelming season. Each day in school offers valuable learning, festive activities, and the familiar rhythms that support children's wellbeing. Arriving on time and attending regularly helps all pupils stay settled, maintain positive habits, and enjoy the build-up to the holidays with confidence. Thank you for helping us keep strong routines in place and ensuring every child continues to thrive as we head towards the end of term.

**MOMENTS
MATTER,
ATTENDANCE
COUNTS.**



WEEKLY PRIZE WINNERS!



Each week we announce five attendance prize winners in our celebration assembly.

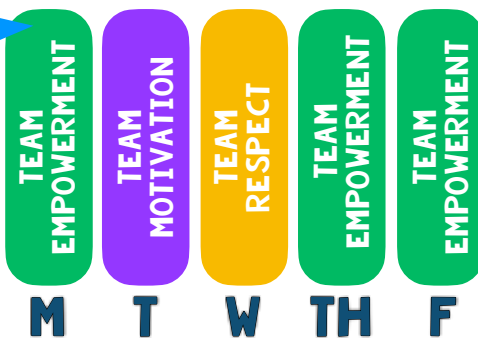
CLASS ATTENDANCE TROPHY WINNERS!



98.8%

Every week, the class with the best weekly attendance wins the famous 'Flo Melly Attendance Trophy'.

DREAM TEAM DAILY WINNERS!



Every day, we see which DREAM team had the best attendance. The winning team receives 10 tokens!

WHOLE-SCHOOL ATTENDANCE
SO FAR THIS YEAR

93.0%

WHOLE-SCHOOL PERSISTENT
ABSENTEEISM

25.0%

NUMBER OF 100% ATTENDEES
THIS WEEK

357

NUMBER OF 100% ATTENDEES
THIS YEAR

91

GOLD, SILVER AND BRONZE!

At the end of every week we celebrate those classes who finish in gold, silver and bronze place. These classes receive a certificate to hang proudly in their classrooms! The winning class also get to keep the famous Flo Melly trophy in their classroom for the week!



Well done to 1B, who were the only class to beat our 97% target this week. Let's see if we can beat that next week!

ATTENDANCE MATTERS LOST DAYS = LOST LEARNING!

Think 90% attendance is good? Think again! This is what lost days really looks like! Now do you think 90% attendance is good?

IN SCHOOL, ON TIME, EVERY DAY!

	Days missed	Lessons missed	School weeks missed
95%	10 days missed	40 lessons missed	2 weeks missed
90%	19 days missed	76 lessons missed	3 weeks and 4 days missed
85%	28 days missed	112 lessons missed	5 weeks and 3 days missed
80%	37 days missed	148 lessons missed	7 weeks and 2 days missed