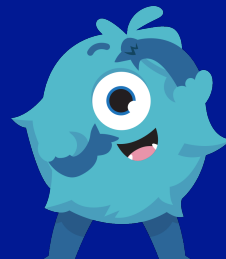


Friday 9th January 2025

# FLORENCE MELLY COMMUNITY PRIMARY SCHOOL WEEKLY ATTENDANCE NEWSLETTER

IF YOU CAN DREAM IT, YOU CAN DO IT!



## IN SCHOOL, ON TIME, EVERY DAY!

**This week's  
key  
attendance  
message...**

Well done to everyone for getting back into school after the Christmas holidays – we know that can be tough! Great attendance and punctuality make every school day count! As we head into the Spring term, let's keep arriving on time, ready to learn. Even better news...there's a brand-new reward launching for students who achieve 100% attendance this term. As it was so successful last time round, we will be offering two lucky winners the chance to take home two more jam-packed cinema hampers with £50 vouchers!  
Don't miss a day... you won't want to miss this!

**MOMENTS  
MATTER,  
ATTENDANCE  
COUNTS.**



### WEEKLY PRIZE WINNERS!



Each week we announce five attendance prize winners in our celebration assembly.

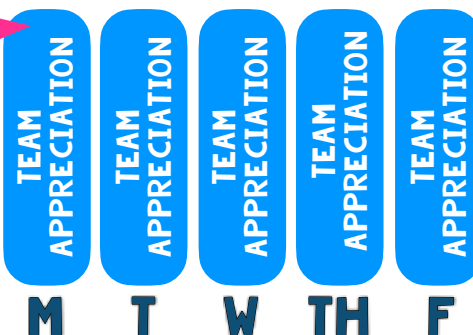
### CLASS ATTENDANCE TROPHY WINNERS!



96.1%

Every week, the class with the best weekly attendance wins the famous 'Flo Melly Attendance Trophy'.

### DREAM TEAM DAILY WINNERS!



Every day, we see which DREAM team had the best attendance. The winning team receives 10 tokens!

WHOLE-SCHOOL ATTENDANCE  
SO FAR THIS YEAR

**92.8%**

WHOLE-SCHOOL PERSISTENT  
ABSENTEEISM

**22.8%**

NUMBER OF 100% ATTENDEES  
THIS WEEK

**316**

NUMBER OF 100% ATTENDEES  
THIS YEAR

**74**

### GOLD, SILVER AND BRONZE!

At the end of every week we celebrate those classes who finish in gold, silver and bronze place. These classes receive a certificate to hang proudly in their classrooms! The winning class also get to keep the famous Flo Melly trophy in their classroom for the week!



No class beat our 97% target this week. Let's see if we can beat that next week!

### ATTENDANCE MATTERS LOST DAYS = LOST LEARNING!

Think 90% attendance is good? Think again! This is what lost days really looks like! Now do you think 90% attendance is good?

### IN SCHOOL, ON TIME, EVERY DAY!

	Days missed	Lessons missed	School weeks missed
95%	10 days missed	40 lessons missed	2 weeks missed
90%	19 days missed	76 lessons missed	3 weeks and 4 days missed
85%	28 days missed	112 lessons missed	5 weeks and 3 days missed
80%	37 days missed	148 lessons missed	7 weeks and 2 days missed